



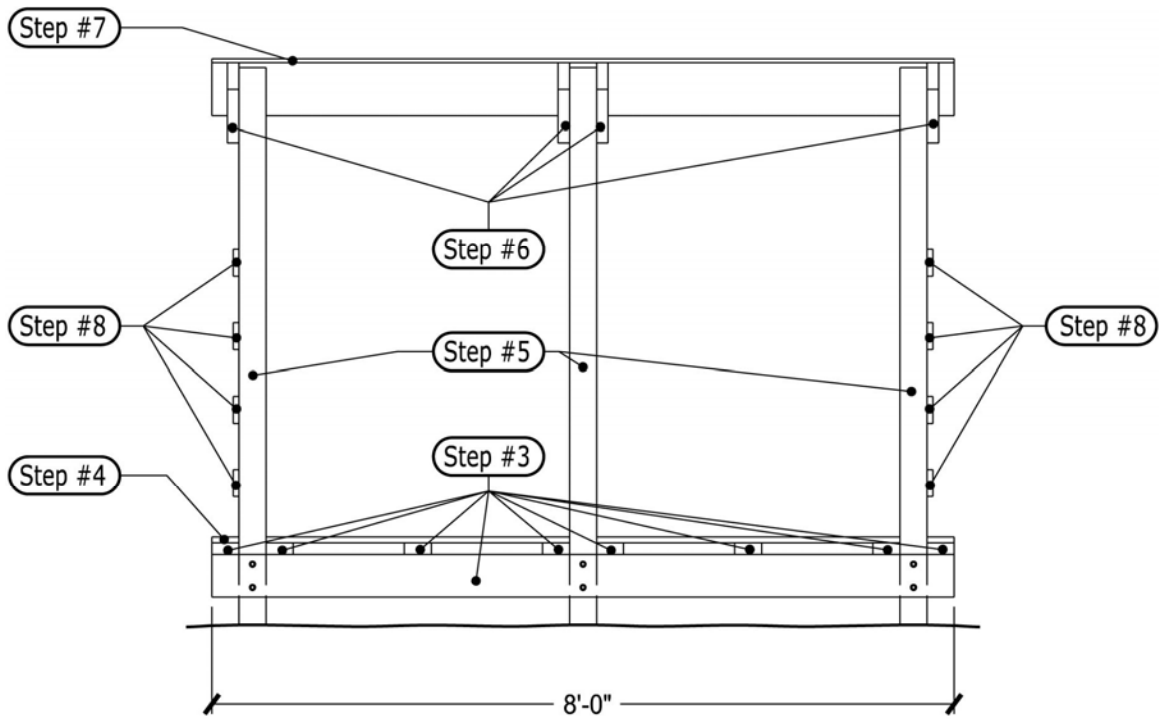
How To Build a Wood Shed

IS YOUR WOOD
READY
TO BURN 

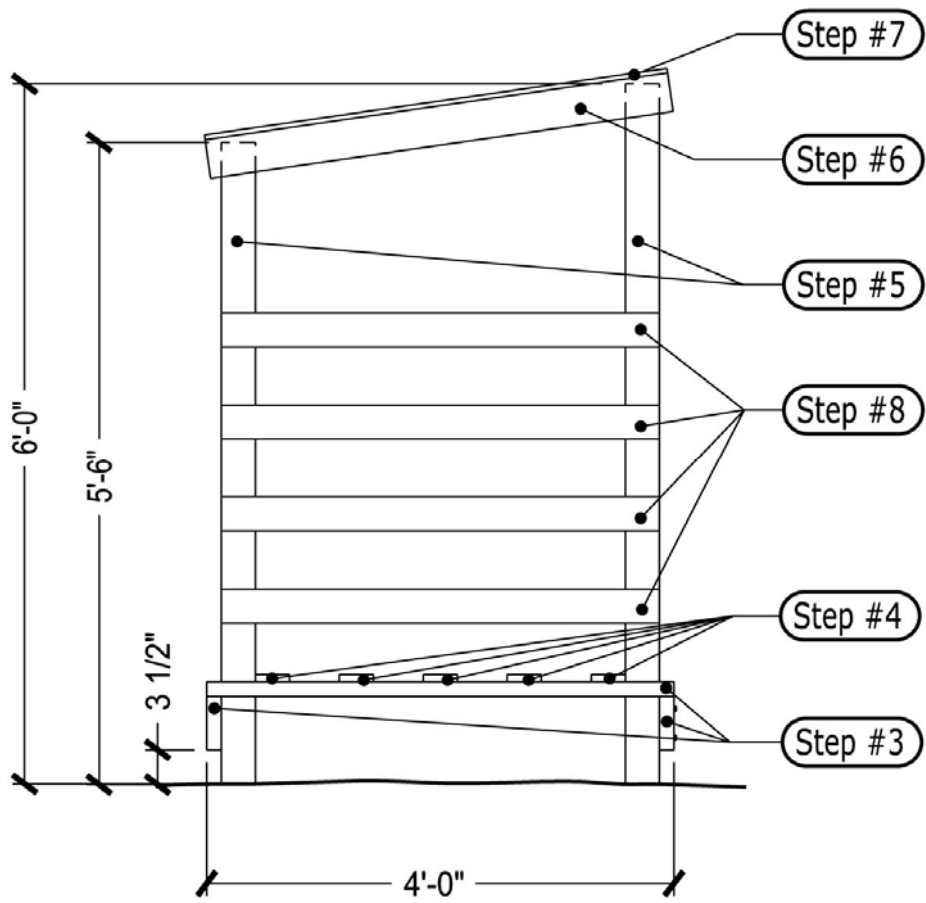
Eight-Step Wood Shed Construction

Note: Lumber sizes are on the back page

- Step #1** Find a level surface to build the shed. *The shed should be located in a section of your yard or property where it will get a lot of sun during the summer months and where it will be shielded from heavy fall and winter rains.*
- Step #2** Cut all lumber to size.
- Step #3** Build the frame structure. Lay out the (2) 2" x 6" x 8' floor supports parallel to each other. Mark where the support posts will be positioned and then lay out the (8) 2" x 4" x 4' floor joists between the floor supports so they are evenly spaced between where the support post locations. Use (2) 3" deck screws to secure the floor joists to the 2" x 6" x 8' floor supports.
- Step #4** Build the floor. Place the (4) 1" x 4" x 8' floor slats next to and evenly spaced between each post. Attach the floor slats with (2) 1 1/2" deck screws at each 2" x 4."
- Step #5** Install the posts. Place the (3) 4" x 4" x 6' posts in the front and the (3) 4" x 4" x 5'-6" posts in the back where marked on the floor supports. Use clamps to hold the posts in position and then secure with the lag screws. Do one at a time.
- Step #6** Attach the roof rafters. Clamp on the (4) 2" x 4" x 4' roof Rafters to the outer sides of the outside posts and on both sides of the inner post. Attach with (2) 3" deck screws at each post.
- Step #7** Screw on the roof. Place the 1/2" x 4' x 8' CDX plywood roof and hold with clamps. Attach with 1 1/2" deck screws every 6" along each 2" x 4" x 4' rafter. You can add roofing materials at your discretion.
- Step #8** Add (8) 1" x 4" x 3'9" side slats with 6" airspace between each slat to the side of the shed. Affix the slats to the posts with (2) 1 1/2" deck screws.



Front View



Side View

Time and Materials List

Time: 4 hours
Materials cost: \$200 *as of 2009*
Level of skill: Basic

Tools

Heavy-duty extension cord
Circular saw (7-1/4" blade)
Drill
Drill bits (1/2")
Phillips head screw tip bit
Auger bits (1/2")
Clamps

Materials

Outdoor Treated Lumber

2-Floor supports	2" x 6" x 8'	
6-Support posts	4" x 4" x 6'	cut three to 5' 6"
4-Floor joists	2" x 4" x 8'	cut to 4' lengths (8)
2-Roof joists	2" x 4" x 8'	cut to 4' lengths (4)
4-Flooring slats	1" x 4" x 8'	Utility-grade Cedar
8-Side slats	1" x 4" x 3'9"	
1-CDX plywood	1/2" x 4' x 8'	

Other

1/4" x 6" lag screws
3" galvanized deck screws
1 1/2" galvanized deck screws
Roofing material (owner selected)