

Spokane Regional Clean Air Agency Air Quality Report – May 2021

The Air Quality Index (AQI) was in the GOOD category on all but one day in May (Figure 1). The maximum daily AQI for the month was 52 (MODERATE) based on a 24-hour average PM₁₀ concentration of 57 micrograms of particulate matter per cubic meter of air ($\mu\text{g}/\text{m}^3$) recorded at the Spokane-Augusta & Fiske monitoring station on the 27th (Table 1). The maximum daily AQI for PM_{2.5} was 47 (GOOD, 24-hour avg = $11.3 \mu\text{g}/\text{m}^3$ at Colbert on the 5th) and the maximum daily AQI for ground-level ozone was 50 (GOOD, 8-hour avg = 0.054 ppm at Greenbluff on the 16th).

Figure 1: Air Quality Index (AQI) values for May 2021. The data represent the maximum AQI values across all monitoring stations within Spokane County.

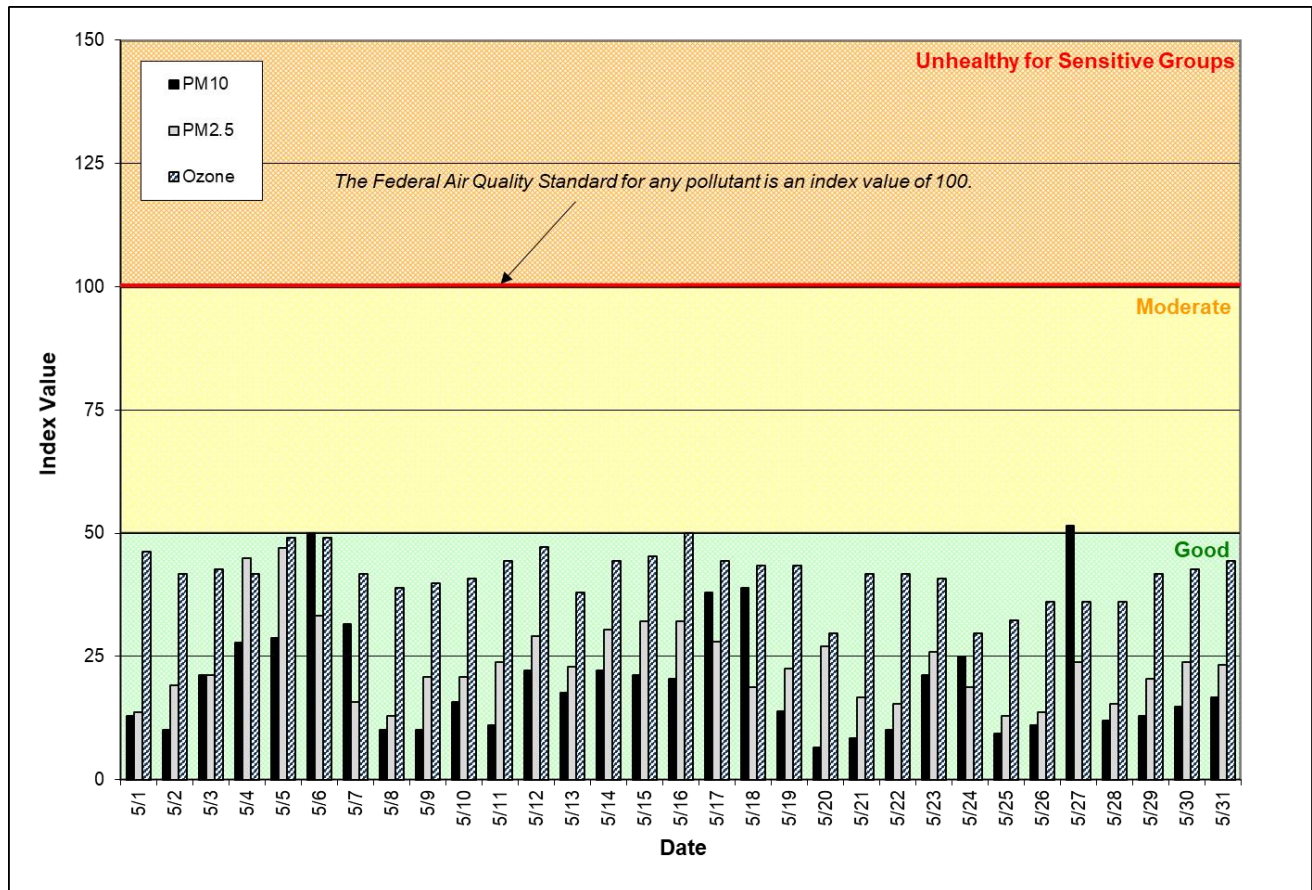
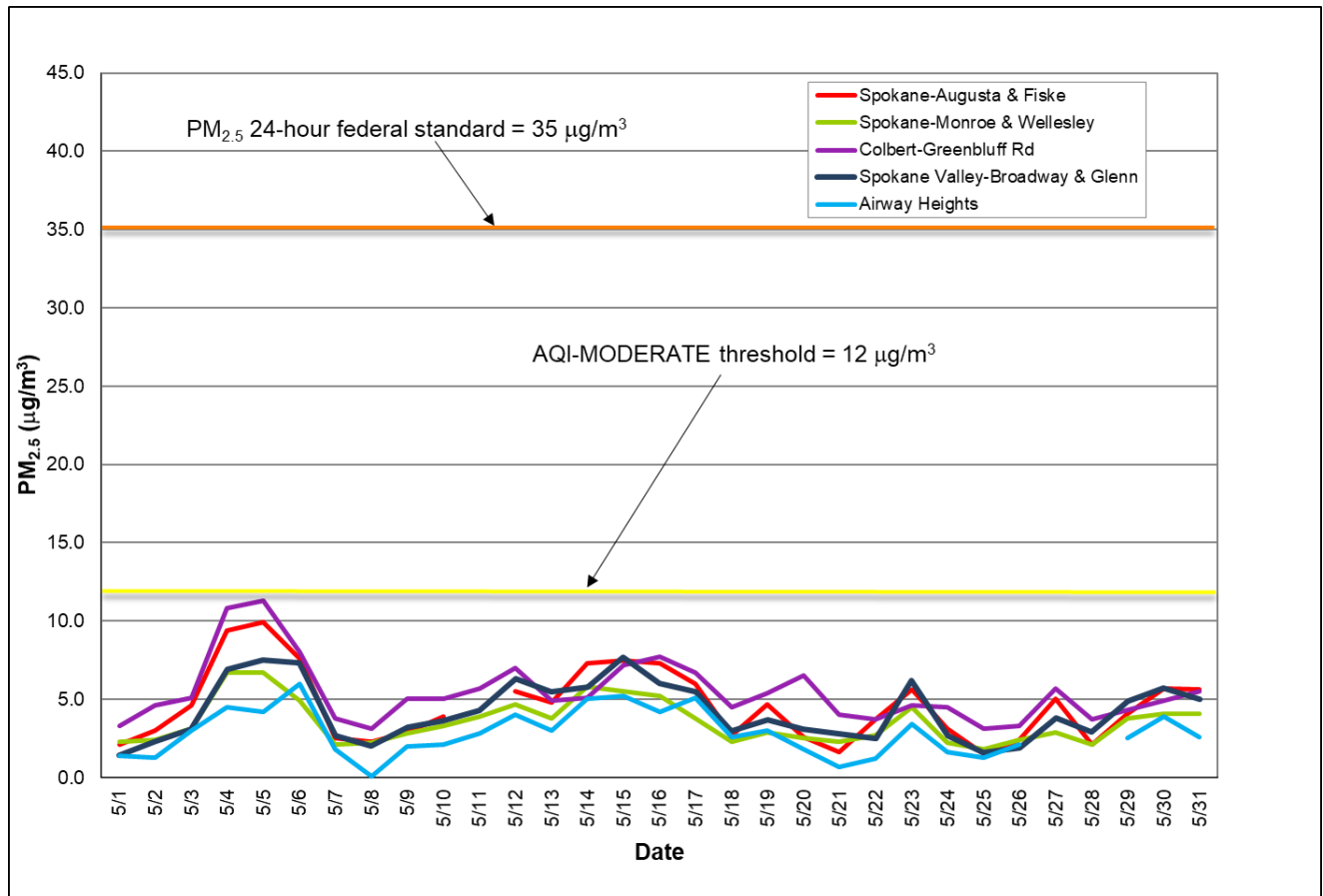


Figure 2 shows daily PM_{2.5} mass concentrations across the air monitoring network in Spokane County.

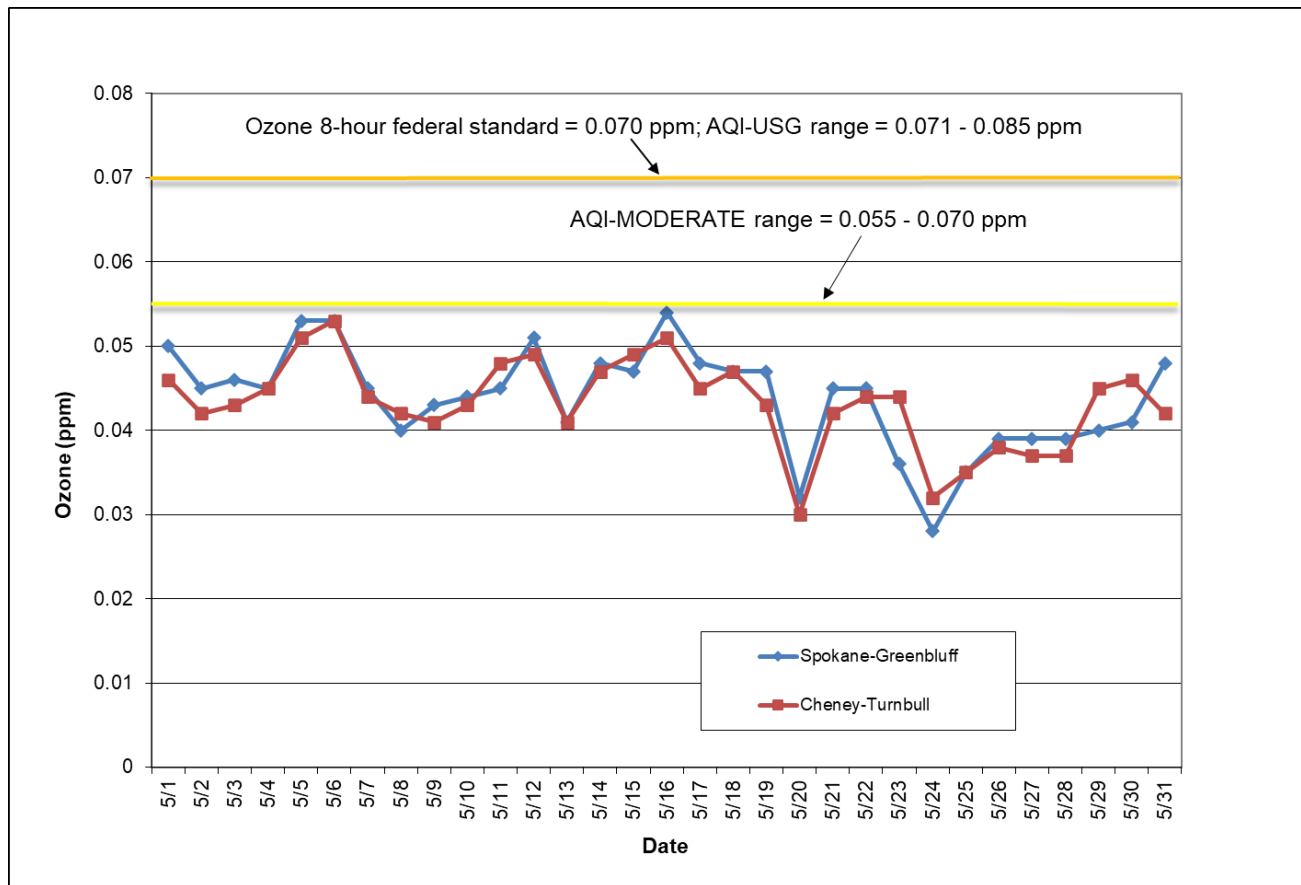
See Appendix 1 of this report for information about federal air quality standards or Appendix 2 for a description of the AQI.

Figure 2: Multi-station 24-hour average PM_{2.5} for May 2021; Spokane County.



As stated at the beginning of this report, the maximum 8-hour running average ozone concentration for the month was 0.054 ppm (AQI=50) recorded at Greenbluff on the 16th (Figure 3). Eight-hour average ozone concentrations of 0.054 ppm (AQI=50) and below are considered “moderate” air quality according to the AQI. In Washington State, ground-level ozone is monitored May through September each year.

Figure 3: Eight-hour maximum ozone concentrations for the Spokane region in May. The threshold for the moderate category of the AQI for ozone is 0.055 ppm averaged over eight hours. An ozone measurement above 0.070 ppm, averaged over eight hours, is the level of the federal ozone standard. It is not a violation of the standard to exceed this level on a given day because determination of attainment status is based on averaging data over a period of years.



The daily air quality data for May for all monitoring stations in the Spokane region are provided in Appendix 3. Current and historical air quality data can be obtained electronically from Ecology’s air monitoring data website, <https://enviwa.ecology.wa.gov/home/map>.

Tables 1 and 2 contain the maximum AQI values for each pollutant for the month and for the year-to-date. Table 3 summarizes the daily AQIs by category for the month and year-to-date.

Table 1: Maximum AQI values and pollutant concentrations for this reporting period.

Pollutant	AQI		Location	Date
O ₃	50 (conc. = 0.054 ppm)	Good	Greenbluff	5/16
PM ₁₀	52 (conc. = 57 µg/m ³)	Moderate	Spokane-Augusta & Fiske	5/27
PM _{2.5}	47 (conc. = 11.3 µg/m ³)	Good	Colbert	5/5

Table 2: Maximum AQI values and pollutant concentrations for this year to date.

Pollutant	AQI		Location	Date
O ₃	50 (conc. = 0.054 ppm)	Good	Greenbluff	5/16
PM ₁₀	61 (conc. = 76 µg/m ³)	Moderate	Spokane-Augusta & Fiske	3/28
PM _{2.5}	67 (conc. = 20.5 µg/m ³)	Moderate	Spokane Valley – Broadway & Glenn	1/23

Table 3: AQI summary as of May 31, 2021

Category	Number of days in May	Number of days this year to date
Good (0-50)	30	135
Moderate (51-100)	1	16
Unhealthy for Sensitive Groups (101-150)	0	0
Unhealthy (151-200)	0	0
Very Unhealthy (201-300)	0	0
Hazardous (>300)	0	0

Appendix 1 – National Ambient Air Quality Standards

The Clean Air Act requires EPA to set National Ambient Air Quality Standards (NAAQS) for six common air pollutants, carbon monoxide (CO), lead (Pb), nitrogen dioxide (NO₂), particulate matter (PM₁₀ and PM_{2.5}), ground-level ozone (O₃) and sulfur dioxide (SO₂; Table A-1). These are known as “criteria” pollutants because the US EPA established regulatory limits to concentrations in ambient air using human health or environmentally based criteria. Carbon monoxide, particulate matter and ozone are monitored in Spokane County by the Spokane Regional Clean Air Agency (SRCAA) and the Washington State Department of Ecology (Ecology).

Table A-1: National Ambient Air Quality Standards

Pollutant [links to historical tables of NAAQS reviews]		Primary/ Secondary	Averaging Time	Level	Form
Carbon Monoxide (CO)		primary	8 hours	9 ppm	Not to be exceeded more than once per year
			1 hour	35 ppm	
Lead (Pb)		primary and secondary	Rolling 3 month period	0.15 µg/m ³ (1)	Not to be exceeded
Nitrogen Dioxide (NO₂)		primary	1 hour	100 ppb	98th percentile of 1-hour daily maximum concentrations, averaged over 3 years
		primary and secondary	1 year	53 ppb (2)	Annual Mean
Ozone (O₃)		primary and secondary	8 hours	0.070 ppm (3)	Annual fourth-highest daily maximum 8-hour concentration, averaged over 3 years
Particle Pollution (PM)	PM _{2.5}	primary	1 year	12.0 µg/m ³	annual mean, averaged over 3 years
		secondary	1 year	15.0 µg/m ³	annual mean, averaged over 3 years
		primary and secondary	24 hours	35 µg/m ³	98th percentile, averaged over 3 years
	PM ₁₀	primary and secondary	24 hours	150 µg/m ³	Not to be exceeded more than once per year on average over 3 years
Sulfur Dioxide (SO₂)		primary	1 hour	75 ppb (4)	99th percentile of 1-hour daily maximum concentrations, averaged over 3 years
		secondary	3 hours	0.5 ppm	Not to be exceeded more than once per year

(1) In areas designated nonattainment for the Pb standards prior to the promulgation of the current (2008) standards, and for which implementation plans to attain or maintain the current (2008) standards have not been submitted and approved, the previous standards (1.5 µg/m³ as a calendar quarter average) also remain in effect.

(2) The level of the annual NO₂ standard is 0.053 ppm. It is shown here in terms of ppb for the purposes of clearer comparison to the 1-hour standard level.

(3) Final rule signed October 1, 2015, and effective December 28, 2015. The previous (2008) O₃ standards additionally remain in effect in some areas. Revocation of the previous (2008) O₃ standards and transitioning to the current (2015) standards will be addressed in the implementation rule for the current standards.

(4) The previous SO₂ standards (0.14 ppm 24-hour and 0.03 ppm annual) will additionally remain in effect in certain areas: (1) any area for which it is not yet 1 year since the effective date of designation under the current (2010) standards, and (2) any area for which implementation plans providing for attainment of the current (2010) standard have not been submitted and approved and which is designated nonattainment under the previous SO₂ standards or is not meeting the requirements of a SIP call under the previous SO₂ standards (40 CFR 50.4(3)). A SIP call is an EPA action requiring a state to resubmit all or part of its State Implementation Plan to demonstrate attainment of the require NAAQS.

Appendix 2 – Air Quality Index

The Air Quality Index (AQI) is EPA’s color-coded tool for communicating daily air quality to the public and can be calculated for any of the criteria pollutants except lead, provided monitoring data are available. An index value above 100 indicates that the concentration of a criteria pollutant exceeded the limit established in the NAAQS. Categories of the AQI are “Good” (green, 0-50), “Moderate” (yellow, 51-100), “Unhealthy for Sensitive Groups” (USG; orange, 101-150), “Unhealthy” (red, 151-200), “Very Unhealthy” (purple, 201-300) and “Hazardous” (maroon, 301-500; Table A-2).

Table A-2: Air pollutant breakpoints for the Air Quality Index.

Air Quality Index Levels of Health Concern	Color Code	Index Numerical Value	Breakpoints				Health Effects
			O ₃ (ppm) 8-hour	PM _{2.5} (µg/m ³) 24-hour	PM ₁₀ (µg/m ³) 24-hour	CO (ppm) 8-hour	
Good	Green	0-50	0.000-0.054	0.0-12.0	0-54	0.0-4.4	Air quality is considered satisfactory and air pollution poses little or no risk.
Moderate	Yellow	51-100	0.055-0.070	12.1-35.4	55-154	4.5-9.4	Air quality is acceptable; however, for some pollutants there may be a moderate health concern for a very small number of people who are unusually sensitive to air pollution.
Unhealthy for Sensitive Groups	Orange	101-150	0.071-0.085	35.5-55.4	155-254	9.5-12.4	People especially sensitive to air pollution may experience health effects. The general public is not likely to be affected. An AQI in this category or above indicates that air pollution exceeds levels acceptable under federal air quality standards.
Unhealthy	Red	151-200	0.086-0.105	55.5-150.4	255-354	12.5-15.4	Everyone may begin to experience health effects; members of sensitive groups may experience more serious health effects.
Very Unhealthy	Purple	201-300	0.106-0.200	150.5-250.4	355-424	15.5-30.4	Health alert: everyone may experience more serious health effects.
Hazardous	Maroon	>300	0.201 to the Significant Harm Level* (0.600 ppm, 2 hour average)	250.5+	425+	30.5+	Health warnings of emergency conditions. The entire population is more likely to be affected.

*The significant harm level (SHL) is set at a level that represents imminent and substantial endangerment to public health.

Appendix 3

Table A-3: Summary air quality data for May for air monitoring stations in Spokane County. Particulate matter mass concentration is reported as 24-hour averages in micrograms per cubic meter of air ($\mu\text{g}/\text{m}^3$) and daily 8-hour maximum ozone concentrations are reported in parts per million (ppm). Strong winds on the 27th caused an interruption in data communication at Airway Heights on the 27th and 28th.

Pollutant Concentration											Air Quality Index (AQI)											
Date	Ozone - Turnbull NWR (8 hour max, ppm)	Ozone - Greenbluff (8 hour max, ppm)	PM _{2.5} - Airway Heights (24 hour avg, $\mu\text{g}/\text{m}^3$)	PM _{2.5} - Colbert (24 hour avg, $\mu\text{g}/\text{m}^3$)	PM _{2.5} - Spokane, Augusta & Fiske (24 hour avg, $\mu\text{g}/\text{m}^3$)	PM _{2.5} - Spokane Valley, Broadway & Glenn (24 hour avg, $\mu\text{g}/\text{m}^3$)	PM _{2.5} - Spokane, Monroe & Wellesley (24 hour avg, $\mu\text{g}/\text{m}^3$)	PM ₁₀ - Turnbull NWR BAM (24 hour avg, $\mu\text{g}/\text{m}^3$)	PM ₁₀ - Spokane, Augusta & Fiske (24 hour avg, $\mu\text{g}/\text{m}^3$)	PM ₁₀ - Spokane Valley, Broadway & Glenn (24 hour avg, $\mu\text{g}/\text{m}^3$)	Date	Ozone - Turnbull NWR	Ozone - Greenbluff	PM _{2.5} - Airway Heights	PM _{2.5} - Colbert	PM _{2.5} - Spokane - Augusta & Fiske	PM _{2.5} - Broadway & Glenn	PM _{2.5} - Monroe & Wellesley	PM ₁₀ - Turnbull NWR	PM ₁₀ - Augusta & Fiske	PM ₁₀ - Broadway & Glenn	MAXIMUM
5/1	0.046	0.050	1.4	3.3	2.1	1.4	2.3	11	14	11	5/1	43	46	6	14	9	6	10	10	13	10	46
5/2	0.042	0.045	1.3	4.6	3.0	2.3	2.4	6	11	8	5/2	39	42	5	19	13	10	10	6	10	7	42
5/3	0.043	0.046	3.0	5.1	4.6	3.1	3.1	11	23	13	5/3	40	43	13	21	19	13	13	10	21	12	43
5/4	0.045	0.045	4.5	10.8	9.4	6.9	6.7	13	30	20	5/4	42	42	19	45	39	29	28	12	28	19	45
5/5	0.051	0.053	4.2	11.3	9.9	7.5	6.7	20	31	21	5/5	47	49	18	47	41	31	28	19	29	19	49
5/6	0.053	0.053	6.0	8.0	7.6	7.3	4.9	31	54	38	5/6	49	49	25	33	32	30	20	29	50	35	50
5/7	0.044	0.045	1.8	3.8	2.5	2.7	2.1	22	34	24	5/7	41	42	8	16	10	11	9	20	31	22	42
5/8	0.042	0.040	0.1	3.1	2.3	2.0	2.2	8	11	7	5/8	39	37	0	13	10	8	9	7	10	6	39
5/9	0.041	0.043	2.0	5.0	2.9	3.2	2.8	8	11	8	5/9	38	40	8	21	12	13	12	7	10	7	40
5/10	0.043	0.044	2.1	5.0	3.9	3.6	3.3	7	17	10	5/10	40	41	9	21	16	15	14	6	16	9	41
5/11	0.048	0.045	2.8	5.7		4.3	3.9	12		14	5/11	44	42	12	24		18	16	11		13	44
5/12	0.049	0.051	4.0	7.0	5.5	6.3	4.7	18	24	20	5/12	45	47	17	29	23	26	20	17	22	19	47
5/13	0.041	0.041	3.0	4.9	4.8	5.5	3.8	15	19	16	5/13	38	38	13	20	20	23	16	14	18	15	38
5/14	0.047	0.048	5.0	5.1	7.3	5.8	5.8	15	24	17	5/14	44	44	21	21	30	24	24	14	22	16	44
5/15	0.049	0.047	5.2	7.2	7.5	7.7	5.5	14	23	18	5/15	45	44	22	30	31	32	23	13	21	17	45
5/16	0.051	0.054	4.2	7.7	7.3	6.0	5.2	14	22	17	5/16	47	50	18	32	30	25	22	13	20	16	50
5/17	0.045	0.048	5.1	6.7	6.0	5.5	3.8	28	41	30	5/17	42	44	21	28	25	23	16	26	38	28	44
5/18	0.047	0.047	2.6	4.5	2.7	3.0	2.3	32	42	41	5/18	44	44	11	19	11	13	10	30	39	38	44
5/19	0.043	0.047	3.0	5.4	4.7	3.7	2.9	11	15	13	5/19	40	44	13	23	20	15	12	10	14	12	44
5/20	0.030	0.032	1.8	6.5	2.6	3.1	2.5	4	7	5	5/20	28	30	8	27	11	13	10	4	6	5	30
5/21	0.042	0.045	0.7	4.0	1.6	2.8	2.3	6	9	8	5/21	39	42	3	17	7	12	10	6	8	7	42
5/22	0.044	0.045	1.2	3.7	3.7	2.5	2.7	6	11	9	5/22	41	42	5	15	15	10	11	6	10	8	42
5/23	0.044	0.036	3.4	4.6	5.6	6.2	4.5	23	16	15	5/23	41	33	14	19	23	26	19	21	15	14	41
5/24	0.032	0.028	1.6	4.5	3.1	2.7	2.2	27	21	17	5/24	30	26	7	19	13	11	9	25	19	16	30
5/25	0.035	0.035	1.3	3.1	1.5	1.6	1.8	8	10	5	5/25	32	32	5	13	6	7	8	7	9	5	32
5/26	0.038	0.039	2.1	3.3	2.4	1.9	2.4	11	12	6	5/26	35	36	9	14	10	8	10	10	11	6	36
5/27	0.037	0.039		5.7	5.0	3.8	2.9	53	57	45	5/27	34	36		24	21	16	12	49	52	42	52
5/28	0.037	0.039		3.7	2.1	2.9	2.1	8	13	9	5/28	34	36		15	9	12	9	7	12	8	36
5/29	0.045	0.040	2.5	4.3	4.1	4.9	3.8	9	14	9	5/29	42	37	10	18	17	20	16	8	13	8	42
5/30	0.046	0.041	3.9	4.9	5.7	5.7	4.1	13	16	11	5/30	43	38	16	20	24	24	17	12	15	10	43
5/31	0.042	0.048	2.6	5.5	5.6	5.0	4.1	12	18	12	5/31	39	44	11	23	23	21	17	11	17	11	44
AVG	0.043	0.044	2.8	5.4	4.6	4.2	3.5	15	22	16	AVG	40	41	12	23	19	18	15	14	20	15	41
MAX	0.053	0.054	6.0	11.3	9.9	7.7	6.7	53	57	45	MAX	49	50	25	47	41	32	28	49	52	42	52