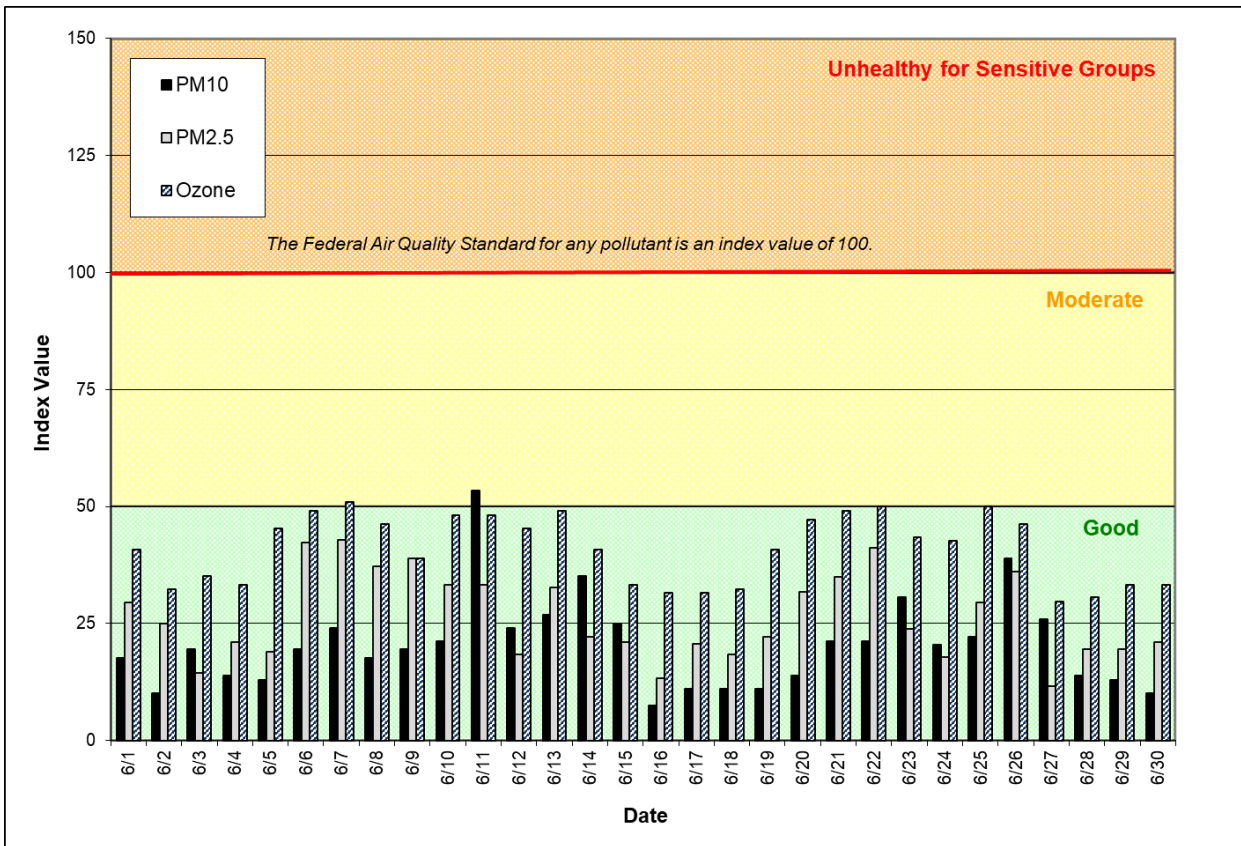


# Spokane Regional Clean Air Agency Air Quality Report - June 2024

Air quality in Spokane County was GOOD on all but two days in June as determined by the Air Quality Index (AQI, **Figures 1 and Table 1**). The number of days the AQI has been outside of the GOOD range has totaled only five so far in 2024, all of which were in the MODERATE category. Blowing dust was responsible for the maximum daily AQI value in June – 53, based on a 24-hour average PM<sub>10</sub> concentration of 60 µg/m<sup>3</sup> at the Spokane-Augusta & Fiske air monitoring station (**Figure 2 and Table 2**).

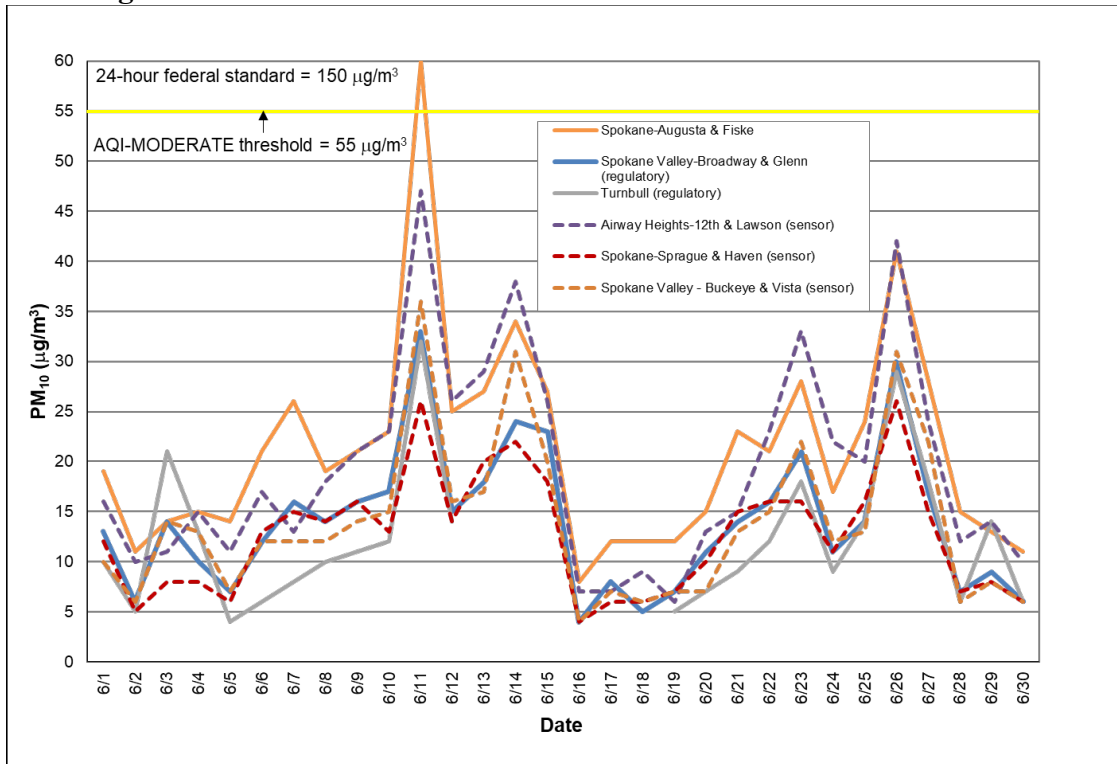
The maximum PM<sub>2.5</sub>-based daily AQI was 43 (GOOD, 24-hour PM<sub>2.5</sub> mass concentration = 7.7 µg/m<sup>3</sup>), recorded on the 7<sup>th</sup> at Spokane-Augusta & Fiske (**Figure 3**) and the maximum ozone-based AQI was 51 (MODERATE, 8-hour concentration = 0.055), recorded on the 7<sup>th</sup> at both Greenbluff and Turnbull (**Figure 4**). Ozone was the predominant air pollutant on all days except the 11<sup>th</sup>.

**Figure 1: Daily Air Quality Index (AQI) values for June 2024.** The data represent the maximum AQI values across all monitoring stations within Spokane County. Air pollutants monitored in Spokane County by Spokane Regional Clean Air Agency and the Washington State Department of Ecology are represented: PM<sub>10</sub>, PM<sub>2.5</sub>, and ozone.

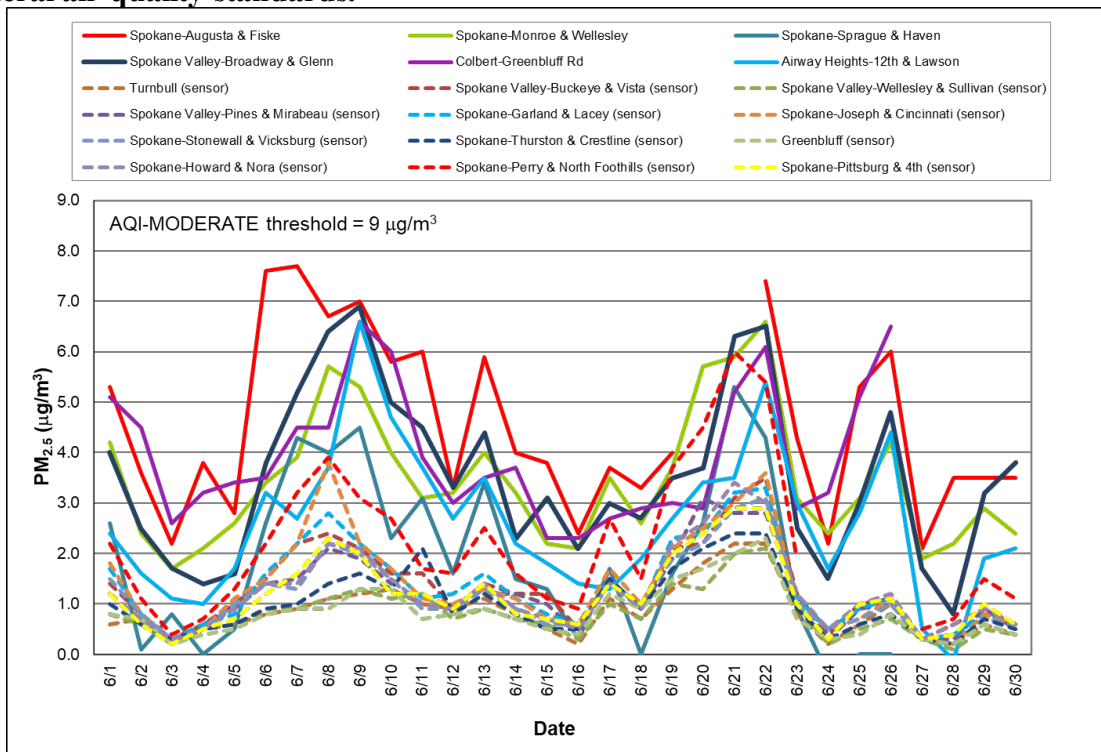


See Appendix 1 of this report for information about federal air quality standards, Appendix 2 for a description of the AQI, or Appendix 3 for a summary of daily ozone, PM<sub>2.5</sub>, and PM<sub>10</sub> mass concentrations and AQIs across the Spokane-area ambient air monitoring network. Current and historical ambient air quality data can also be obtained from the Washington State Department of Ecology’s air monitoring data website, <https://enviwa.ecology.wa.gov/home/map>.

**Figure 2: Daily 24-hour average PM<sub>10</sub>, all Spokane County monitoring stations, June 2024. Blowing dust pushed the 24-hour average PM<sub>10</sub> mass concentration to 60 µg/m<sup>3</sup> at Spokane-Augusta & Fiske on the 11<sup>th</sup>. The power to the monitor at Spokane-Augusta & Fiske failed to recover automatically after an interruption on Sunday the 26<sup>th</sup>. “Low-cost” sensor data are shown here using dashed lines.**



**Figure 3: Daily 24-hour average PM<sub>2.5</sub>, all Spokane County monitoring stations, June 2024. Data depicted using dashed lines were collected using “low-cost” sensors. Regulatory monitoring data (Spokane Valley-Broadway & Glenn, round markers) determine the Spokane area’s compliance with federal air quality standards.**



**Figure 4: Eight-hour maximum ozone concentrations for the Spokane region in June. (Spokane-Greenbluff and Cheney-Turnbull air monitoring stations).**

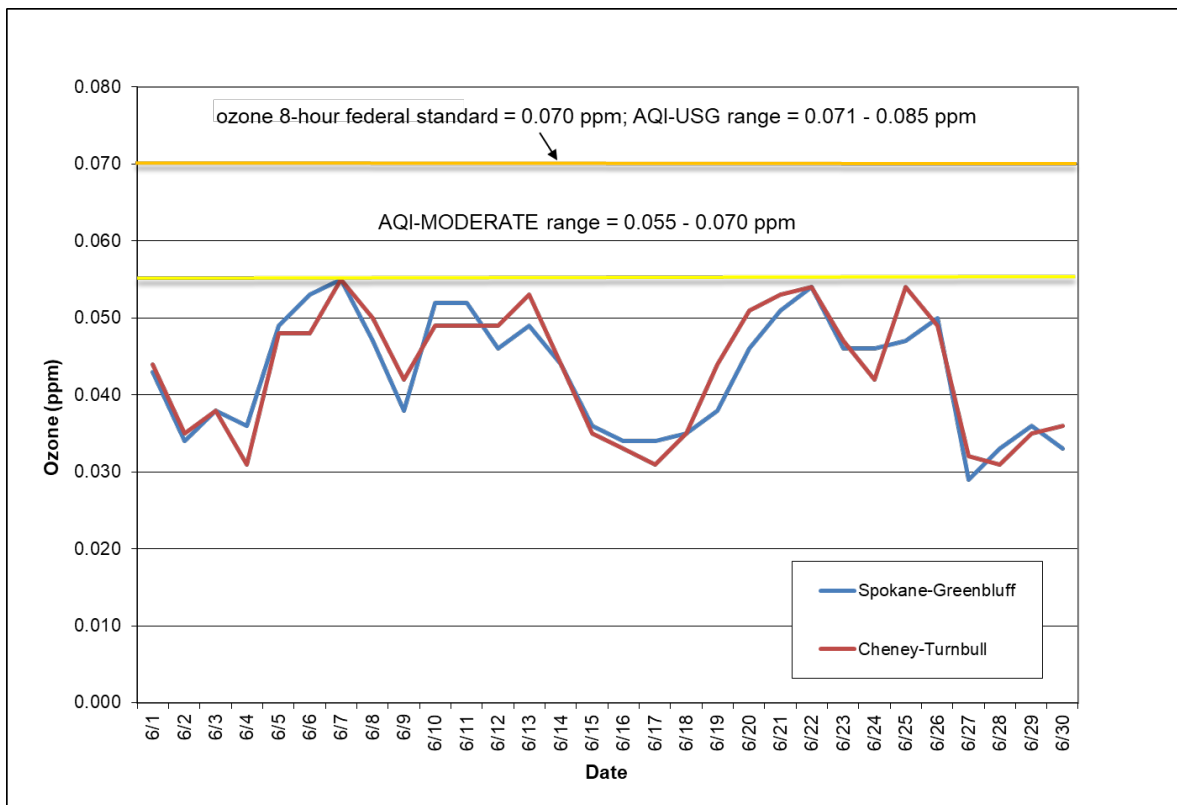


Table 1 summarizes the daily AQIs by category for the month and year-to-date and Tables 2 and 3 contain the maximum AQI values for each pollutant for the month and for the year, respectively.

**Table 1: AQI summary, June 2024**

Category	Number of days in June	Number of days this year to date
Good (0-50)	28	177
Moderate (51-100)	2	5
Unhealthy for Sensitive Groups (101-150)	0	0
Unhealthy (151-200)	0	0
Very Unhealthy (201-300)	0	0
Hazardous (>300)	0	0

**Table 2: Maximum AQI values and pollutant concentrations for this reporting period.**

Pollutant	AQI		Location	Date
Ozone	51 (conc. = 0.055 ppm)	Moderate	Greenbluff and Turnbull	6/7
PM <sub>10</sub>	53 (mass conc. = 60 µg/m <sup>3</sup> )	Moderate	Spokane – Augusta & Fiske	6/11
PM <sub>2.5</sub>	43 (conc. = 7.7 µg/m <sup>3</sup> )	Good	Spokane – Augusta & Fiske	6/7

**Table 3: Maximum AQI values and pollutant concentrations this year.**

Pollutant	AQI		Location	Date
Ozone	51 (conc. = 0.055 ppm)	Moderate	Greenbluff	4/23
			Greenbluff and Turnbull	6/7
PM <sub>10</sub>	70 (mass conc. = 94 µg/m <sup>3</sup> )	Moderate	Spokane – Augusta & Fiske	5/16
PM <sub>2.5</sub>	52 (conc. = 12.5 µg/m <sup>3</sup> )	Moderate	Spokane – Sprague & Haven	1/26

## Appendix 1 – National Ambient Air Quality Standards

The Clean Air Act requires EPA to set National Ambient Air Quality Standards (NAAQS) for six common air pollutants, carbon monoxide (CO), lead (Pb), nitrogen dioxide (NO<sub>2</sub>), particulate matter (PM<sub>10</sub> and PM<sub>2.5</sub>), ground-level ozone (O<sub>3</sub>) and sulfur dioxide (SO<sub>2</sub>; Table A-1). These are known as “criteria” pollutants because the US EPA established regulatory limits to concentrations in ambient air using human health or environmentally based criteria. Carbon monoxide, particulate matter and ozone are monitored in Spokane County by the Spokane Regional Clean Air Agency (SRCAA) and the Washington State Department of Ecology (Ecology).

**Table A-1: National Ambient Air Quality Standards**

Pollutant [links to historical tables of NAAQS reviews]		Primary/ Secondary	Averaging Time	Level	Form
<a href="#">Carbon Monoxide (CO)</a>		primary	8 hours	9 ppm	Not to be exceeded more than once per year
			1 hour	35 ppm	
<a href="#">Lead (Pb)</a>		primary and secondary	Rolling 3 month period	0.15 µg/m <sup>3</sup> (1)	Not to be exceeded
<a href="#">Nitrogen Dioxide (NO<sub>2</sub>)</a>		primary	1 hour	100 ppb	98th percentile of 1-hour daily maximum concentrations, averaged over 3 years
		primary and secondary	1 year	53 ppb (2)	Annual Mean
<a href="#">Ozone (O<sub>3</sub>)</a>		primary and secondary	8 hours	0.070 ppm (3)	Annual fourth-highest daily maximum 8-hour concentration, averaged over 3 years
<a href="#">Particle Pollution (PM)</a>	PM <sub>2.5</sub>	primary	1 year	9.0 µg/m <sup>3</sup>	annual mean, averaged over 3 years
		secondary	1 year	15.0 µg/m <sup>3</sup>	annual mean, averaged over 3 years
		primary and secondary	24 hours	35 µg/m <sup>3</sup>	98th percentile, averaged over 3 years
	PM <sub>10</sub>	primary and secondary	24 hours	150 µg/m <sup>3</sup>	Not to be exceeded more than once per year on average over 3 years
<a href="#">Sulfur Dioxide (SO<sub>2</sub>)</a>		primary	1 hour	75 ppb (4)	99th percentile of 1-hour daily maximum concentrations, averaged over 3 years
		secondary	3 hours	0.5 ppm	Not to be exceeded more than once per year

(1) In areas designated nonattainment for the Pb standards prior to the promulgation of the current (2008) standards, and for which implementation plans to attain or maintain the current (2008) standards have not been submitted and approved, the previous standards (1.5 µg/m<sup>3</sup> as a calendar quarter average) also remain in effect. (2) The level of the annual NO<sub>2</sub> standard is 0.053 ppm. It is shown here in terms of ppb for the purposes of clearer comparison to the 1-hour standard level. (3) Final rule signed October 1, 2015, and effective December 28, 2015. The previous (2008) O<sub>3</sub> standards additionally remain in effect in some areas. Revocation of the previous (2008) O<sub>3</sub> standards and transitioning to the current (2015) standards will be addressed in the implementation rule for the current standards. (4) The previous SO<sub>2</sub> standards (0.14 ppm 24-hour and 0.03 ppm annual) will additionally remain in effect in certain areas: (a) any area for which it is not yet 1 year since the effective date of designation under the current (2010) standards, and (b) any area for which implementation plans providing for attainment of the current (2010) standard have not been submitted and approved and which is designated nonattainment under the previous SO<sub>2</sub> standards or is not meeting the requirements of a SIP call under the previous SO<sub>2</sub> standards (40 CFR 50.4(3)). A SIP call is an EPA action requiring a state to resubmit all or part of its State Implementation Plan to demonstrate attainment of the require NAAQS.

## Appendix 2 – Air Quality Index

The Air Quality Index (AQI) is EPA’s color-coded tool for communicating daily air quality to the public and can be calculated for any of the criteria pollutants except lead, provided monitoring data are available. An index value above 100 indicates that the concentration of a criteria pollutant exceeded the limit established in the NAAQS. Categories of the AQI are “Good” (green, 0-50), “Moderate” (yellow, 51-100), “Unhealthy for Sensitive Groups” (USG; orange, 101-150), “Unhealthy” (red, 151-200), “Very Unhealthy” (purple, 201-300) and “Hazardous” (maroon, 301-500; Table A-2). The PM<sub>2.5</sub> breakpoints were updated when the new annual PM<sub>2.5</sub> standard went into effect on May 6<sup>th</sup>.

**Table A-2: Air pollutant breakpoints for the Air Quality Index.**

Air Quality Index Levels of Health Concern	Color Code	Index Numerical Value	Breakpoints				Health Effects
			O <sub>3</sub> (ppm) 8-hour	PM <sub>2.5</sub> (µg/m <sup>3</sup> ) 24-hour	PM <sub>10</sub> (µg/m <sup>3</sup> ) 24-hour	CO (ppm) 8-hour	
<b>Good</b>	Green	0-50	0.000-0.054	0.0-9.0	0-54	0.0-4.4	Air quality is considered satisfactory and air pollution poses little or no risk.
<b>Moderate</b>	Yellow	51-100	0.055-0.070	9.1-35.4	55-154	4.5-9.4	Air quality is acceptable; however, for some pollutants there may be a moderate health concern for a very small number of people who are unusually sensitive to air pollution.
<b>Unhealthy for Sensitive Groups</b>	Orange	101-150	0.071-0.085	35.5-55.4	155-254	9.5-12.4	People especially sensitive to air pollution may experience health effects. The general public is not likely to be affected. An AQI in this category or above indicates that air pollution exceeds levels acceptable under federal air quality standards.
<b>Unhealthy</b>	Red	151-200	0.086-0.105	55.5-125.4	255-354	12.5-15.4	Everyone may begin to experience health effects; members of sensitive groups may experience more serious health effects.
<b>Very Unhealthy</b>	Purple	201-300	0.106-0.200	125.5-225.4	355-424	15.5-30.4	Health alert: everyone may experience more serious health effects.
<b>Hazardous</b>	Maroon	>300	0.201 to the Significant Harm Level* (0.600 ppm, 2 hour average)	225.5+	425+	30.5+	Health warnings of emergency conditions. The entire population is more likely to be affected.

\*The significant harm level (SHL) is set at a level that represents imminent and substantial endangerment to public health.

# Appendix 3

**Table A-3(1): June summary air quality data for air monitoring stations in Spokane County.** Ozone is reported as the daily maximum running 8-hour average in parts per million (ppm) and particulate matter mass concentration is reported as 24-hour averages in micrograms per cubic meter of air ( $\mu\text{g}/\text{m}^3$ ). The  $\text{PM}_{2.5}$  monitor at Colbert-E Greenbluff Rd was offline June 27-30 for annual calibration.  $\text{PM}_{2.5}$  data weren't recorded at Spokane-Augusta & Fiske on the 20<sup>th</sup> and 21<sup>st</sup> because of a data logging error. Sensor malfunctions resulted in data loss on some days for the Spokane-Perry & North Foothills and Spokane Valley-Pines & Mirabeau sites. The  $\text{PM}_{10}$  monitor at Turnbull was offline June 13-18 for annual calibration.

Date	Pollutant Concentration																										
	Ozone (ppm) Max 8-Hour Avg		PM <sub>2.5</sub> ( $\mu\text{g}/\text{m}^3$ ) 24-Hour Avg																		PM <sub>10</sub> ( $\mu\text{g}/\text{m}^3$ ) 24-Hour Avg						
	Ozone - Turnbull NWR	Ozone - Greenbluff	PM <sub>2.5</sub> - Airway Heights, 12th & Lawson	PM <sub>2.5</sub> - Colbert, E Greenbluff Rd	PM <sub>2.5</sub> - Spokane, Augusta & Fiske	PM <sub>2.5</sub> - Spokane, Monroe & Wellesley	PM <sub>2.5</sub> - Spokane, Sprague & Haven	PM <sub>2.5</sub> - Spokane Valley, Broadway & Glenn	PM <sub>2.5</sub> - Spokane, Garland & Lacey (sensor)	PM <sub>2.5</sub> - Spokane, Howard & Nora (sensor)	PM <sub>2.5</sub> - Spokane, Joseph & Cincinnati (sensor)	PM <sub>2.5</sub> - Spokane, Perry & North Foothills (sensor)	PM <sub>2.5</sub> - Spokane, Thurston & Crestline (sensor)	PM <sub>2.5</sub> - Spokane, Pitsburg & 4th (sensor)	PM <sub>2.5</sub> - Spokane, Stonewall & Vicksburg (sensor)	PM <sub>2.5</sub> - Spokane Valley, Buckeye & Vista (sensor)	PM <sub>2.5</sub> - Spokane Valley, Pines & Mirabeau (sensor)	PM <sub>2.5</sub> - Spokane Valley, Wellesley & Sullivan (sensor)	PM <sub>2.5</sub> - Greenbluff (sensor)	PM <sub>2.5</sub> - Turnbull NWR (sensor)	PM <sub>10</sub> - Spokane, Augusta & Fiske	PM <sub>10</sub> - Spokane Valley, Broadway & Glenn	PM <sub>10</sub> - Turnbull NWR	PM <sub>10</sub> - Airway Heights, 12th & Lawson (sensor)	PM <sub>10</sub> - Spokane, Sprague & Haven (sensor)	PM <sub>10</sub> - Spokane Valley, Buckeye & Vista (sensor)	
6/1	0.044	0.043	2.4	5.1	5.3	4.2	2.6	4.0	1.7	1.2	1.8	2.2	1.0	1.2	1.5	1.4		0.8	0.8	0.6	19	8	10	15	6	9	
6/2	0.035	0.034	1.6	4.5	3.6	2.4	0.1	2.5	0.8	0.7	0.8	1.1	0.6	0.6	0.8	0.8	0.7	0.6	0.7	0.7	11	12	5	12	13	9	
6/3	0.038	0.038	1.1	2.6	2.2	1.7	0.8	1.7	0.3	0.3	0.3	0.4	0.3	0.2	0.3	0.3		0.2	0.2	0.3	14	9	21	13	10	7	
6/4	0.031	0.036	1.0	3.2	3.8	2.1	0.0	1.4	0.6	0.5	0.5	0.7	0.5	0.5	0.5	0.6	0.6	0.5	0.4	0.5	15	12	13	12	13	9	
6/5	0.048	0.049	1.7	3.4	2.8	2.6	0.5	1.6	0.8	0.9	1.1	1.3	0.6	0.7	1.0	1.0	0.9	0.6	0.5	0.6	14	5	4	4	4	4	
6/6	0.048	0.053	3.2	3.5	7.6	3.4	2.6	3.8	1.6	1.4	1.5	2.2	0.9	1.2	1.4	1.5	1.4	0.9	0.8	0.8	21	4	6	5	3	5	
6/7	0.055	0.055	2.7	4.5	7.7	3.9	4.3	5.2	2.2	1.4	2.2	3.2	1.0	1.6	1.3	2.2	1.5	0.9	0.9	0.9	26	5	8	5	4	4	
6/8	0.050	0.047	3.7	4.5	6.7	5.7	4.0	6.4	2.8	2.2	3.8	3.9	1.4	2.3	2.2	2.4	2.1	1.1	0.9	1.1	19	7	10	11	6	6	
6/9	0.042	0.038	6.6	6.6	7.0	5.3	4.5	6.9	2.2	2.1	2.2	3.1	1.6	2.0	2.0	2.1	1.9	1.3	1.3	1.2	21	14	11	15	16	11	
6/10	0.049	0.052	4.7	6.0	5.8	4.0	2.3	5.0	1.7	1.5	1.7	2.7	1.3	1.2	1.5	1.6	1.4	1.1	1.3	1.3	23	16	12	20	20	17	
6/11	0.049	0.052	3.7	3.9	6.0	3.1	3.1	4.5	1.1	1.0	1.1	1.7	2.1	1.2	0.9	1.6		1.2	0.7	1.0	60	18	32	24	17	17	
6/12	0.049	0.046	2.7	3.0	3.3	3.2	1.6	3.3	1.2	0.9	1.0	1.6	0.8	0.9	0.9	0.9		0.7	0.8	0.9	25	13	14	20	15	15	
6/13	0.053	0.049	3.5	3.5	5.9	4.0	3.4	4.4	1.6	1.4	1.3	2.5	1.2	1.4	1.3	1.4	1.2	0.9	0.9	1.1	27	18		27	16	20	
6/14	0.044	0.044	2.2	3.7	4.0	3.2	1.5	2.3	1.1	0.9	1.1	1.6	0.8	0.8	0.9	1.2	1.2	0.7	0.7	0.8	34	10		14	12	14	
6/15	0.035	0.036	1.8	2.3	3.8	2.2	1.3	3.1	0.8	0.7	0.7	1.1	0.5	0.7	0.6	1.2	1.0	0.6	0.5	0.5	27	17		31	17	17	
6/16	0.033	0.034	1.4	2.3	2.4	2.1	0.3	2.1	0.6	0.5	0.6	0.9	0.5	0.6	0.6	0.5	0.4	0.3	0.4	0.2	8	79		82	42	78	
6/17	0.031	0.034	1.3	2.7	3.7	3.5	1.7	3.0	1.5	1.4	1.7	2.7	1.5	1.4	1.4	1.5	1.5	1.0	1.2	1.1	12	13		13	12	12	
6/18	0.035	0.035	1.9	2.9	3.3	2.6	0.0	2.7	0.9	0.9	1.0	1.5	0.9	1.0	1.0	0.9	0.9	0.7	0.9	0.7	12	10		13	9	10	
6/19	0.044	0.038	2.7	3.0	4.0	3.7	1.6	3.5	2.3	2.2	2.1	3.7	1.7	2.0	1.9	2.1	1.9	1.4	1.5	1.3	12	7	5	6	7	6	
6/20	0.051	0.046	3.4	2.9		5.7	2.6	3.7	2.4	2.6	2.5	4.5	2.1	2.4	2.2	2.2	3.1	1.3	1.7	1.8	15	7	7	10	9	7	
6/21	0.053	0.051	3.5	5.2		5.9	5.3	6.3	3.2	3.4	3.0	6.0	2.4	2.9	2.9	3.1	2.8	2.0	2.0	2.2	23	9	9	15	8	8	
6/22	0.054	0.054	5.4	6.1	7.4	6.6	4.3	6.5	3.3	3.0	3.6	5.4	2.4	2.9	3.1	3.5	2.8	2.1	2.3	2.2	21	3	12	6	3	4	
6/23	0.047	0.046	3.0	2.9	4.3	3.1	0.9	2.5	1.1	1.2	1.0	1.9	0.9	1.0	1.0	1.2	1.2	1.0	0.7	0.8	28	5	18	8	4	5	
6/24	0.042	0.046	1.7	3.2	2.2	2.4	-0.4	1.5	0.5	0.5	0.5		0.3	0.3	0.5	0.4	0.3	0.2	0.3	0.2	17	5	9	10	6	6	
6/25	0.054	0.047	2.8	5.1	5.3	3.1	0.0	3.0	0.9	1.0	0.7		0.6	1.0	0.7	1.0	0.9	0.5	0.4	0.6	24	12	14	17	11	14	
6/26	0.049	0.050	4.4	6.5	6.0	4.2	0.0	4.8	1.1	1.2	1.1		0.8	1.1	1.0	1.1	1.0	0.7	0.8	1.0	41	5	29	12	6	6	
6/27	0.032	0.029	0.5		2.1	1.9	-0.8	1.7	0.3	0.3	0.3	0.5	0.3	0.3	0.3	0.3	0.3	0.3	0.3	0.3	28	7	18	16	8	6	
6/28	0.031	0.033	-0.1		3.5	2.2	-0.3	0.8	0.4	0.6	0.2	0.7	0.2	0.4	0.2	0.6	0.3	0.1	0.2	0.2	15	15	6	19	13	15	
6/29	0.035	0.036	1.9		3.5	2.9	-0.5	3.2	0.8	0.9	0.8	1.5	0.7	1.0	0.7	0.9	0.9	0.5	0.6	0.6	13	11	14	14	9	13	
6/30	0.036	0.033	2.1		3.5	2.4	-0.9	3.8	0.6	0.6	0.6	1.1	0.5	0.6	0.6	0.6	0.5	0.4	0.4	0.4	11	8	6	10	6	6	
AVG	0.043	0.043	2.6	4.0	4.5	3.4	1.5	3.5	1.3	1.2	1.4	2.2	1.0	1.2	1.2	1.3	1.3	0.8	0.8	0.9	21	12	12	16	11	12	
MAX	0.055	0.055	6.6	6.6	7.7	6.6	5.3	6.9	3.3	3.4	3.8	6.0	2.4	2.9	3.1	3.5	3.1	2.1	2.3	2.2	60	79	32	82	42	78	

**Table A-3(2): June summary Air Quality Index (AQI) data for air monitoring stations in Spokane County.** See Appendix 2 for a description of the AQI.

Air Quality Index (AQI)																											
Date	Ozone		PM <sub>2.5</sub>															PM <sub>10</sub>				MAXIMUM					
	Ozone - Turnbull NWR	Ozone - Greenbluff	PM <sub>2.5</sub> - Airway Heights, 12th & Lawson	PM <sub>2.5</sub> - Colbert, E Greenbluff Rd	PM <sub>2.5</sub> - Spokane, Augusta & Fiske	PM <sub>2.5</sub> - Spokane, Monroe & Wellesley	PM <sub>2.5</sub> - Spokane, Sprague & Haven	PM <sub>2.5</sub> - Spokane Valley, Broadway & Glenn	PM <sub>2.5</sub> - Spokane, Garland & Lacey (sensor)	PM <sub>2.5</sub> - Spokane, Howard & Nora (sensor)	PM <sub>2.5</sub> - Spokane, Joseph & Cincinnati (sensor)	PM <sub>2.5</sub> - Spokane, Perry & North Foothills (sensor)	PM <sub>2.5</sub> - Spokane, Thurston & Crestline (sensor)	PM <sub>2.5</sub> - Spokane, Pittsburg & 4th (sensor)	PM <sub>2.5</sub> - Spokane, Stonewall & Vicksburg (sensor)	PM <sub>2.5</sub> - Spokane Valley, Buckeye & Vista (sensor)	PM <sub>2.5</sub> - Spokane Valley, Pines & Mirabeau (sensor)	PM <sub>2.5</sub> - Spokane Valley, Wellesley & Sullivan (sensor)	PM <sub>2.5</sub> - Greenbluff (sensor)	PM <sub>2.5</sub> - Turnbull NWR (sensor)	PM <sub>10</sub> - Spokane, Augusta & Fiske		PM <sub>10</sub> - Spokane Valley, Broadway & Glenn	PM <sub>10</sub> - Turnbull NWR	PM <sub>10</sub> - Airway Heights, 12th & Lawson (sensor)	PM <sub>10</sub> - Spokane, Sprague & Haven (sensor)	PM <sub>10</sub> - Spokane Valley, Buckeye & Vista (sensor)
6/1	41	40	13	28	29	23	14	22	9	7	10	12	6	7	8	8		4	4	3	18	9	9	15	11	9	41
6/2	32	31	9	25	20	13	1	14	4	4	4	6	3	3	4	4	4	3	4	4	10	6	5	9	5	6	32
6/3	35	35	6	14	12	9	4	9	2	2	2	2	2	1	2	2		1	1	2	13	13	19	10	7	13	35
6/4	29	33	6	18	21	12	0	8	3	3	3	4	3	3	3	3	3	3	2	3	14	12	12	14	7	12	33
6/5	44	45	9	19	16	14	3	9	4	5	6	7	3	4	6	6	5	3	3	3	13	6	4	10	6	6	45
6/6	44	49	18	19	42	19	14	21	9	8	8	12	5	7	8	8	8	5	4	4	19	11	6	16	12	11	49
6/7	51	51	15	25	43	22	24	29	12	8	12	18	6	9	7	12	8	5	5	5	24	11	7	12	14	11	51
6/8	46	44	21	25	37	32	22	36	16	12	21	22	8	13	12	13	12	6	5	6	18	11	9	17	13	11	46
6/9	39	35	37	37	39	29	25	38	12	12	12	17	9	11	11	12	11	7	7	7	19	13	10	19	15	13	39
6/10	45	48	26	33	32	22	13	28	9	8	9	15	7	7	8	9	8	6	7	7	21	14	11	21	12	14	48
6/11	45	48	21	22	33	17	17	25	6	6	6	9	12	7	5	9		7	4	6	53	33	30	44	24	33	53
6/12	45	43	15	17	18	18	9	18	7	5	6	9	4	5	5	5		4	4	5	23	15	13	24	13	15	45
6/13	49	45	19	19	33	22	19	24	9	8	7	14	7	8	7	8	7	5	5	6	25	16		27	19	16	49
6/14	41	41	12	21	22	18	8	13	6	5	6	9	4	4	5	7	7	4	4	4	31	29		35	20	29	41
6/15	32	33	10	13	21	12	7	17	4	4	4	6	3	4	3	7	6	3	3	3	25	19		24	17	19	33
6/16	31	31	8	13	13	12	2	12	3	3	3	5	3	3	3	3	2	2	2	1	7	4		6	4	4	31
6/17	29	31	7	15	21	19	9	17	8	8	9	15	8	8	8	8	8	6	7	6	11	6		6	6	6	31
6/18	32	32	11	16	18	14	0	15	5	5	6	8	5	6	6	5	5	4	5	4	11	6		8	6	6	32
6/19	41	35	15	17	22	21	9	19	13	12	12	21	9	11	11	12	11	8	8	7	11	6	5	6	6	6	41
6/20	47	43	19	16		32	14	21	13	14	14	25	12	13	12	12	17	7	9	10	14	6	6	12	9	6	47
6/21	49	47	19	29		33	29	35	18	19	17	33	13	16	16	17	16	11	11	12	21	12	8	14	14	12	49
6/22	50	50	30	34	41	37	24	36	18	17	20	30	13	16	17	19	16	12	13	12	19	14	11	21	15	14	50
6/23	44	43	17	16	24	17	5	14	6	7	6	11	5	6	6	7	7	6	4	4	26	20	17	31	15	20	44
6/24	39	43	9	18	12	13	0	8	3	3	3		2	2	3	2	2	1	2	1	16	11	8	20	10	11	43
6/25	50	44	16	28	29	17	0	17	5	6	4		3	6	4	6	5	3	2	3	22	12	13	19	15	12	50
6/26	45	46	24	36	33	23	0	27	6	7	6		4	6	6	6	6	4	4	6	38	29	27	39	24	29	46
6/27	30	27	3		12	11	0	9	2	2	2	3	2	2	2	2	2	2	2	2	26	20	17	22	14	20	30
6/28	29	31	0		19	12	0	4	2	3	1	4	1	2	1	3	2	1	1	1	14	6	6	11	6	6	31
6/29	32	33	11		19	16	0	18	4	5	4	8	4	6	4	5	5	3	3	3	12	7	13	13	7	7	33
6/30	33	31	12		19	13	0	21	3	3	3	6	3	3	3	3	3	2	2	2	10	6	6	9	6	6	33
AVG	40	40	15	22	25	19	9	19	7	7	8	12	6	7	7	7	7	5	5	5	20	13	11	18	12	13	41
MAX	51	51	37	37	43	37	29	38	18	19	21	33	13	16	17	19	17	12	13	12	53	33	30	44	24	33	53